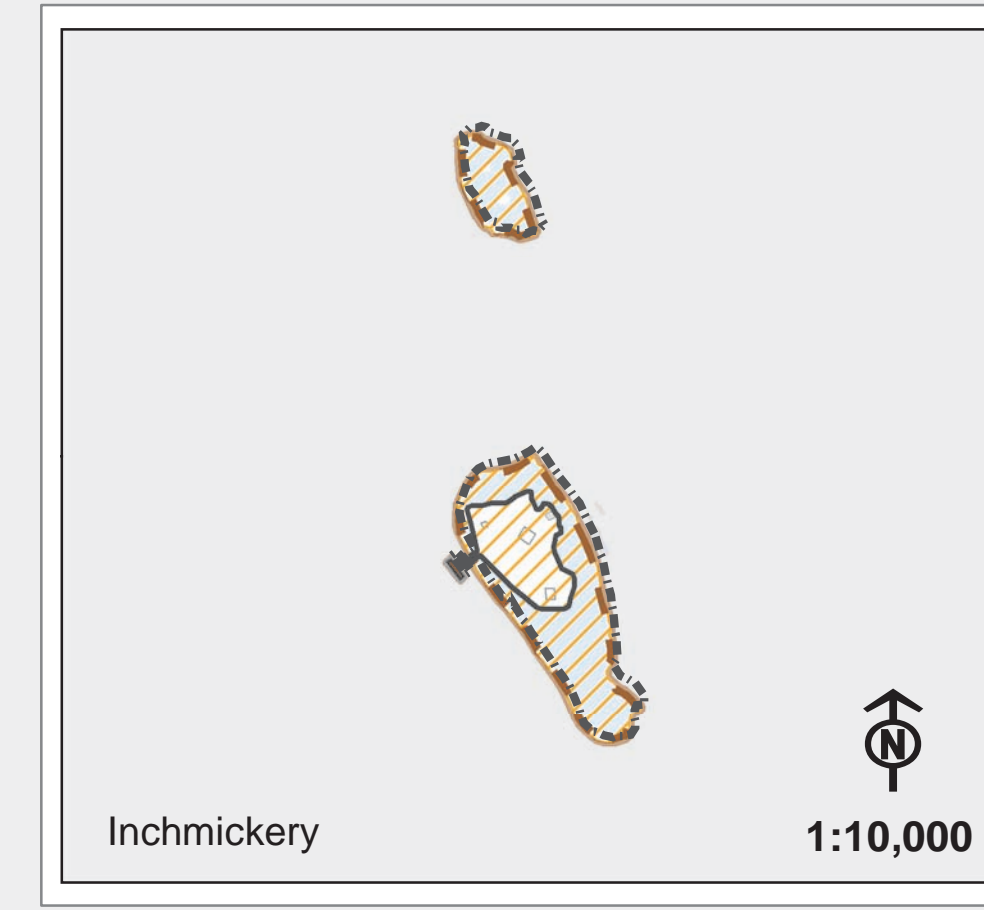


Reproduced from the Ordnance Survey mapping with permission of the Controller of Her Majesty's Stationery Office
© Crown Copyright. Unauthorised reproduction is illegal.
Crown Copyright and may lead to prosecution or civil proceedings.
Licence Number: 60029426, City of Edinburgh Council 2009.

1:15,000

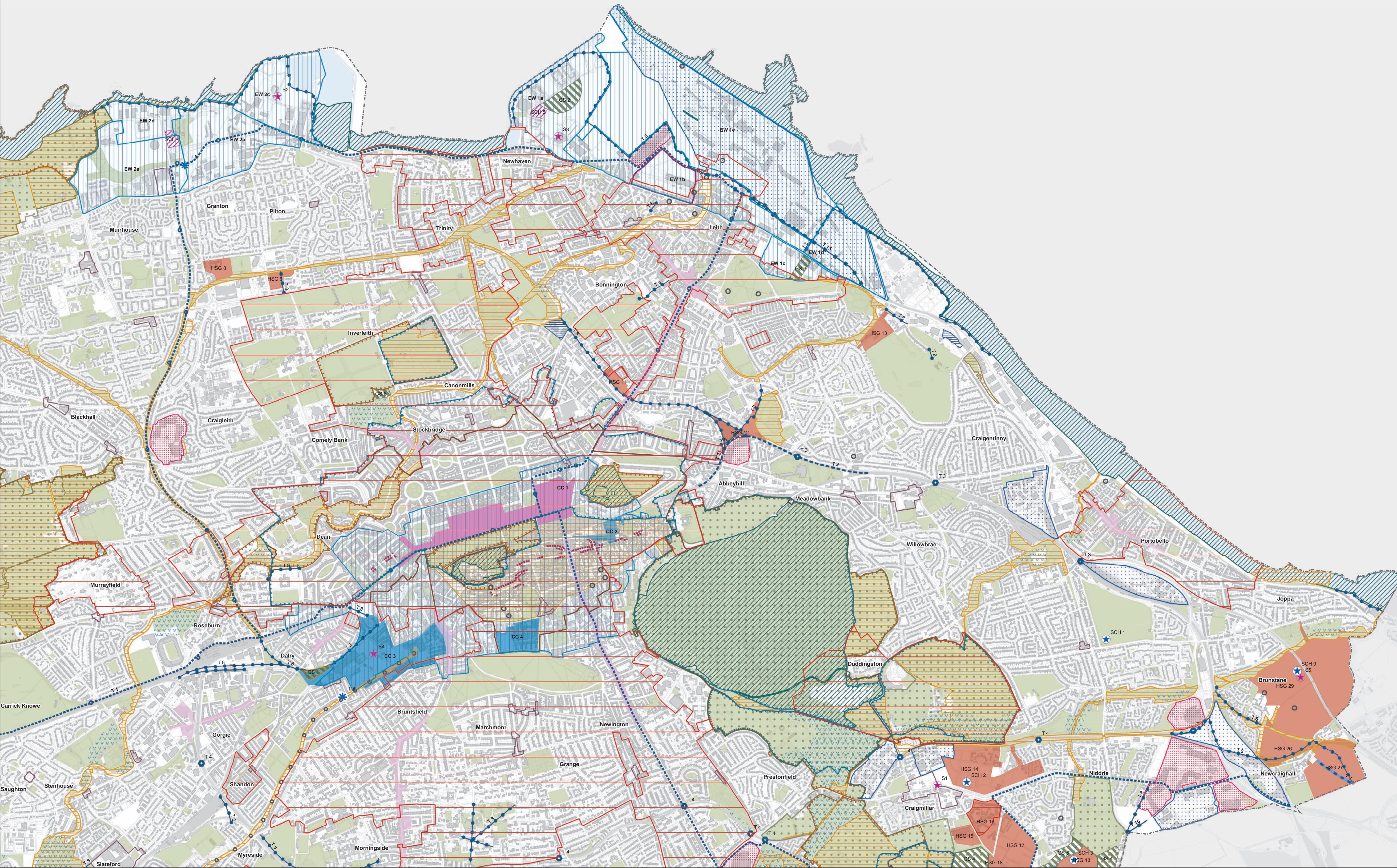


EDINBURGH LOCAL DEVELOPMENT PLAN PROPOSALS MAP SECOND PROPOSED PLAN JUNE 2014

The City of Edinburgh Council Boundary
General plan - wide policies
Del 2, Del 1-3, Env 2-4, Env 7-9, Env 12, Env 18, Env 18-22, Hou 2-7, Hou 9-10, Ret 5, Ret 7, Ret 9-10, Tra 1-4, Tra 6, Tra 8, Tra 10, RS 1, RS 4, RS 6, RS 7

Proposals Map designations and relevant policies and proposals in the Written Statement

	Urban Area - refers to all LDP area outwith the Green Belt and Countryside Policy Area	Emp 1, Emp 9-10, Hou 1, Hou 8, Ret 5, RS 3
	City Centre	Del 3, Emp 1, Ret 6, Tra 5
	City Centre Proposal	(CC1) Table 10 (CC2-4) Table 3, Table 10, Hou 1
	Edinburgh Waterfront	(EW 1a-c, EW 2a-d) Del 4, Hou 1, Ret 6 (EW 1d&e) Table 2, Del 4, Emp 8
	Edinburgh Park/South Gyle	Del 5, Emp 1
	World Heritage Site	Env 1
	Designated Conservation Area	Env 5, Env 6
	Scheduled Ancient Monument (including Union Canal)	Env 8
	Historic Garden / Designed Landscape - Inventory Site	Env 7
	Green Belt	Env 10
	Countryside Policy Area	Env 10
	Special Landscape Area	Env 11
	International and National Natural Heritage Designation (Natura 2000 Site and/or SSSI)	Env 13, Env 14
	Local Nature Conservation Site	Env 15
	Local Nature Reserve	Env 15
	Area of Importance for Flood Management	Env 21
	Open Space	Env 18, Env 19
	Greenspace Proposal (GS1-11)	Table 1
	Pentland Hills Regional Park	Env 17
	Housing Proposal (HSG 1 - HSG 37)	Tables 3 & 4, Hou 1
	School Proposal (SCH 4-5)	Table 5
	Indicative School Proposal (SCH 1-3, SCH 6-10)	Table 5
	Strategic Business Centre	Emp 1
	Business and Industry Area	Emp 8, RS 3
	Special Economic Area (Emp 2-8)	Table 2, Emp 2-8
	Safeguard for Potential Relocation of Royal Highland Centre	Emp 5
	Local Centre	Table 6, Ret 4, Ret 8
	Town Centre	Table 6, Ret 2, Ret 6, Ret 8
	City Centre Retail Core	Table 6, Ret 1, Ret 8
	Commercial Centre	Table 7, Ret 3
	Speciality Shopping Street	Ret 9
	Indicative Shopping Proposal (S1-S5)	Table 8, Ret 4, Ret 8
	Tram Route Safeguard with Proposed Stop	Table 9, Tra 7
	Railway Safeguard	Table 9, Tra 7
	Station Safeguard	Table 9, Tra 7
	Roundabout / Junction Improvement	Table 9, Tra 9
	Road Safeguard / Improvement	Table 9, Tra 9
	Sheriffhall Junction Upgrade	Table 9, Tra 9
	Cycleway/ Potential Public Transport Safeguard	Table 9, Tra 7-8
	Cycleway / Footpath Safeguard	Table 9, Tra 8
	Cycleway / Footpath Access Safeguard	Table 9, Tra 8
	Safeguard for Potential Additional Runway	Emp 4
	Airport Public Safety Zone	Tra 11
	Safeguarded Waste Management Facility	RS 2, RS 3, RS 4
	Minerals Site	RS 3, RS 5



PLANNING COMMITTEE 12 JUNE 2014 EDINBURGH LOCAL DEVELOPMENT PLAN
PROPOSALS MAP
SECOND PROPOSED PLAN
JUNE 2014

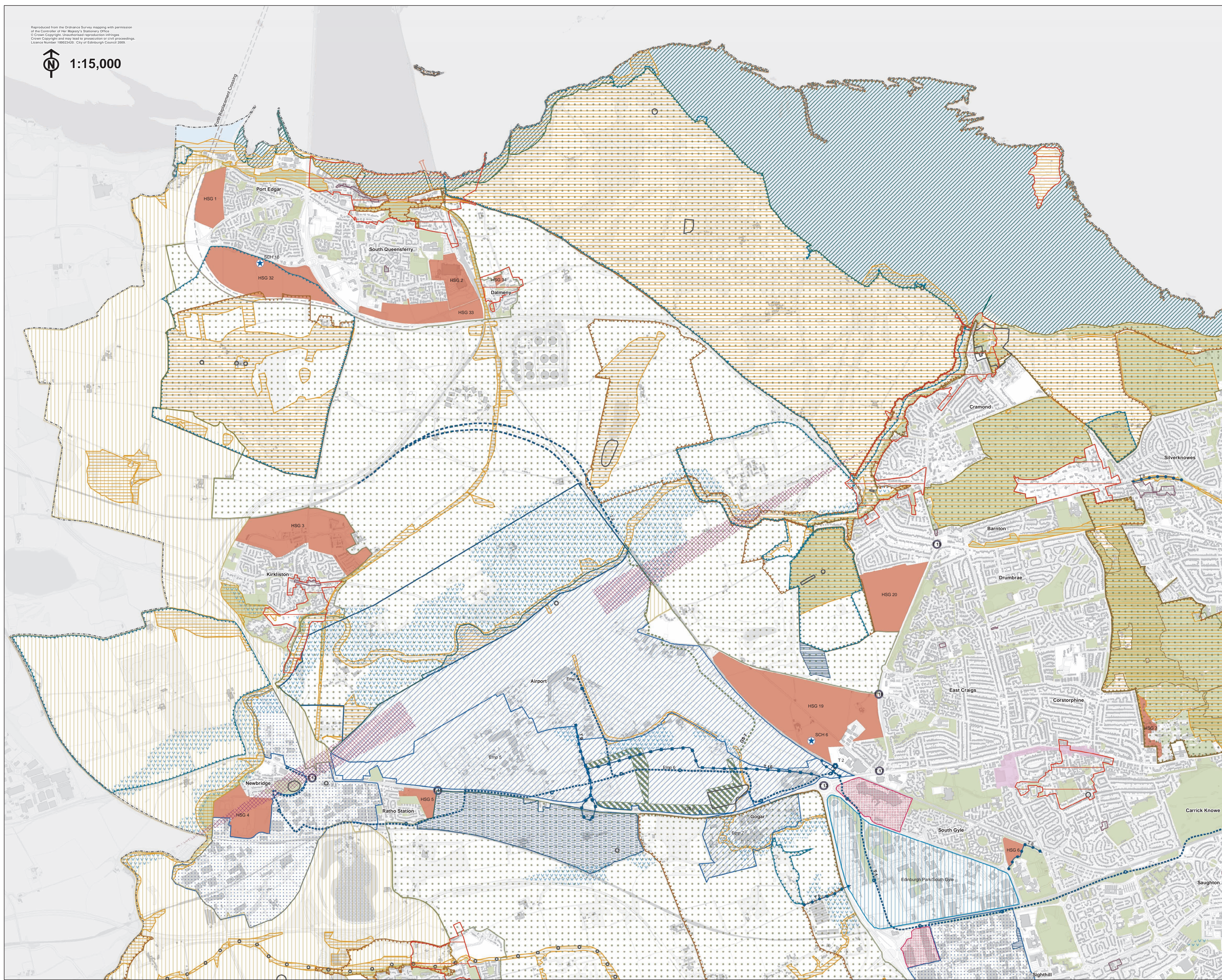
The City of Edinburgh Council Boundary

General plan - wide policies

Del1-2, Del 1-13, Env 2-4, Env 7-9, Env 12, Env 16, Env 18-22, Hou 2-7, Hou 9-10, Ret 5, Ret 7, Ret 9-10, Tra 1-4, Tra 6, Tra 8, Tra 10, RS 1, RS 4, RS 6, RS 7

Proposals Map designations and relevant policies and proposals in the Written Statement

	Urban Area - refers to all LDP area outwith the Green Belt and Countryside Policy Area	Emp 1, Emp 9-10, Hou 1, Hou 8, Ret 5, RS 3
	City Centre	Del 3, Emp 1, Ret 6, Tra 5
	City Centre Proposal	(CC1) Table 10 (CC2-4) Table 3, Table 10, Hou 1
	Edinburgh Waterfront	(EW 1a-c, EW 2a-d) Del 4, Hou 1, Ret 6 (EW 1a&e) Table 2, Del 4, Emp 8
	Edinburgh Park/South Gyle	Del 5, Emp 1
	World Heritage Site	Env 1
	Designated Conservation Area	Env 5, Env 6
	Scheduled Ancient Monument (including Union Canal)	Env 8
	Historic Garden / Designed Landscape - Inventory Site	Env 7
	Green Belt	Env 10
	Countryside Policy Area	Env 10
	Special Landscape Area	Env 11
	International and National Natural Heritage Designation (Natura 2000 Site and/or SSSI)	Env 13, Env 14
	Local Nature Conservation Site	Env 15
	Local Nature Reserve	Env 15
	Area of Importance for Flood Management	Env 21
	Open Space	Env 18, Env 19
	Greenspace Proposal (GS1-11)	Table 1
	Pentland Hills Regional Park	Env 17
	Housing Proposal (HSG 1 - HSG 37)	Tables 3 & 4, Hou 1
	School Proposal (SCH 4-5)	Table 5
	Indicative School Proposal (SCH 1-3, SCH 6-10)	Table 5
	Strategic Business Centre	Emp 1
	Business and Industry Area	Emp 8, RS 3
	Special Economic Area (Emp 2-8)	Table 2, Emp 2-8
	Safeguard for Potential Relocation of Royal Highland Centre	Emp 5
	Local Centre	Table 6, Ret 4, Ret 8
	Town Centre	Table 6, Ret 2, Ret 6, Ret 8
	City Centre Retail Core	Table 6, Ret 1, Ret 8
	Commercial Centre	Table 7, Ret 3
	Speciality Shopping Street	Ret 9
	Indicative Shopping Proposal (S1-S5)	Table 8, Ret 4, Ret 8
	Tram Route Safeguard with Proposed Stop	Table 9, Tra 7
	Railway Safeguard	Table 9, Tra 7
	Station Safeguard	Table 9, Tra 7
	Roundabout / Junction Improvement	Table 9, Tra 9
	Road Safeguard / Improvement	Table 9, Tra 9
	Sheriffhall Junction Upgrade	Table 9, Tra 9
	Cycleway / Potential Public Transport Safeguard	Table 9, Tra 7-8
	Cycleway / Footpath Safeguard	Table 9, Tra 8
	Cycleway / Footpath Access Safeguard	Table 9, Tra 8
	Safeguard for Potential Additional Runway	Emp 4
	Airport Public Safety Zone	Tra 11
	Safeguarded Waste Management Facility	RS 2, RS 3, RS 4
	Minerals Site	RS 3, RS 5



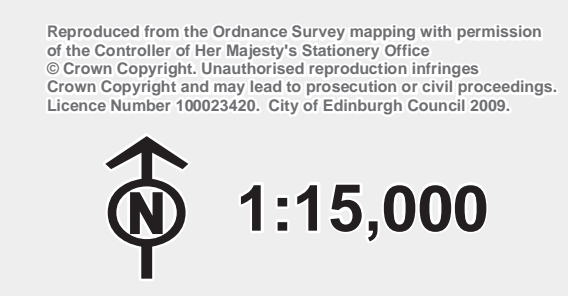
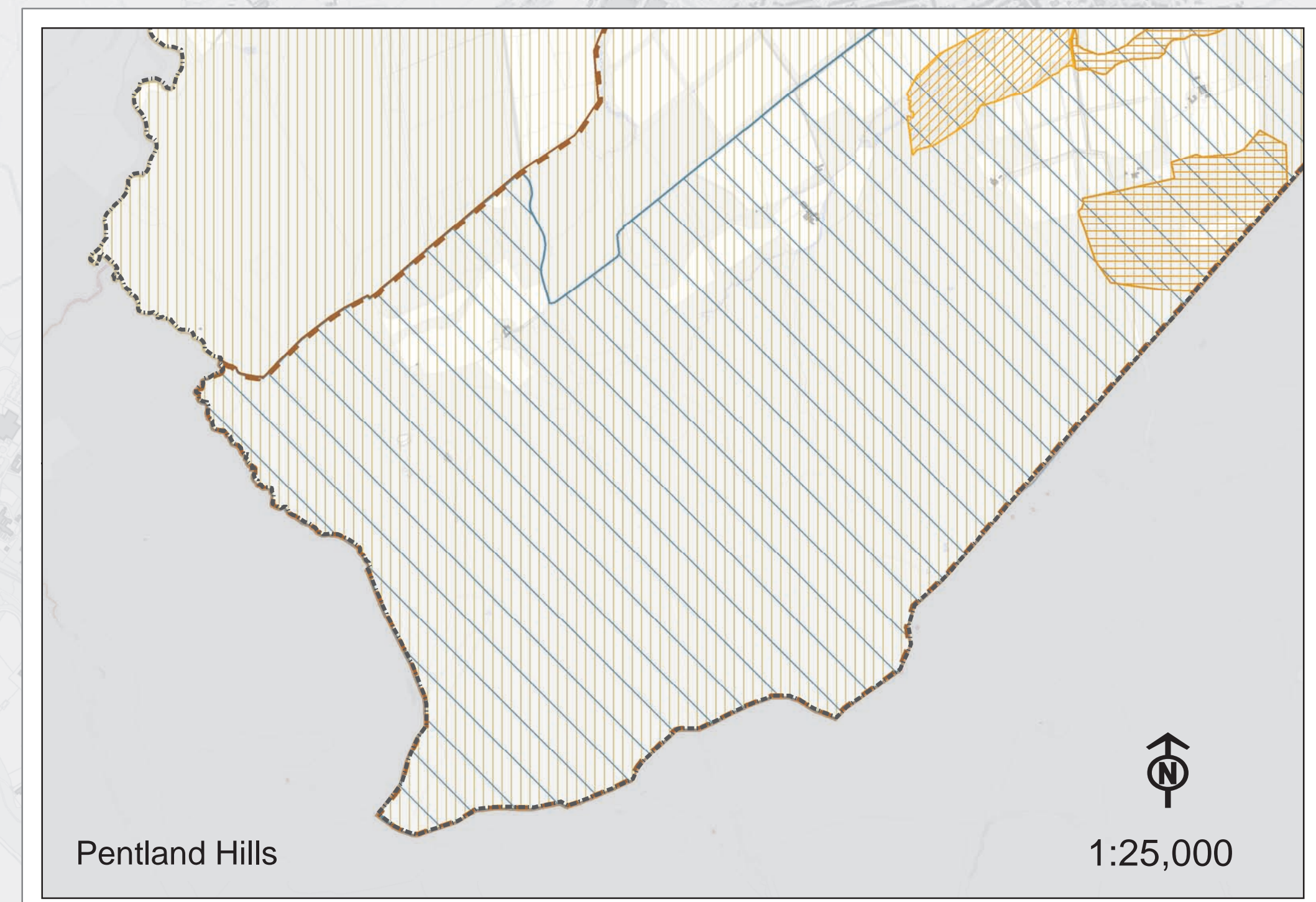
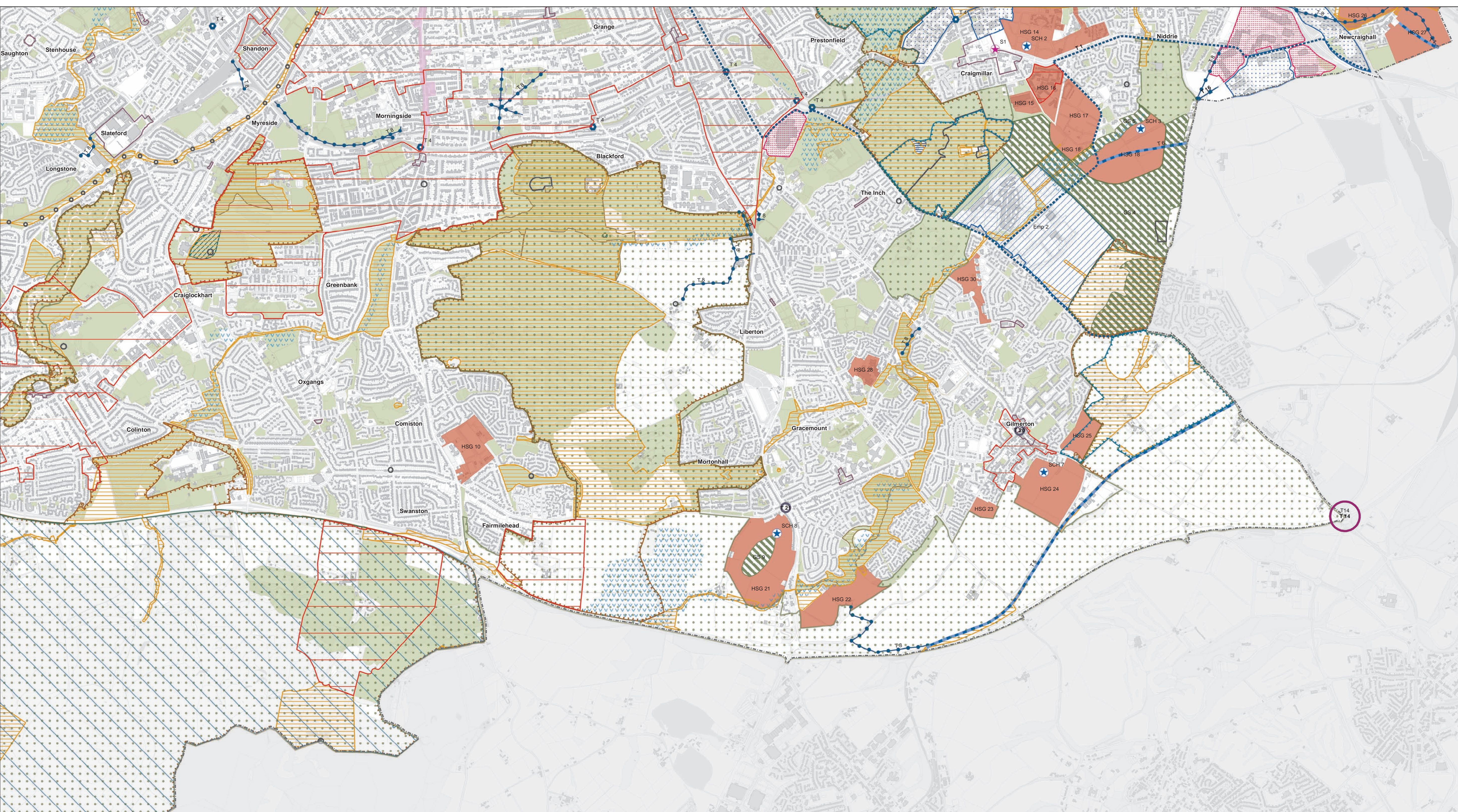
PLANNING COMMITTEE 12 JUNE 2014 EDINBURGH LOCAL DEVELOPMENT PLAN
PROPOSALS MAP
SECOND PROPOSED PLAN JUNE 2014

The City of Edinburgh Council Boundary
General plan - wide policies

Del 2, Des 1-13, Env 2-4, Env 7-9, Env 12, Env 18, Env 18-22, Hou 2-7, Hou 9-10, Ret 5, Ret 7, Ret 9-10, Tra 1-4, Tra 6, Tra 8, Tra 10, RS 1, RS 4, RS 6, RS 7

Proposals Map designations and relevant policies and proposals in the Written Statement

- Urban Area - refers to all LDP area outwith the Green Belt and Countryside Policy Area
 - City Centre
 - City Centre Proposal
 - Edinburgh Waterfront
 - Edinburgh Park/South Gyle
 - World Heritage Site
 - Designated Conservation Area
 - Scheduled Ancient Monument (including Union Canal)
 - Historic Garden / Designed Landscape - Inventory Site
 - Green Belt
 - Countryside Policy Area
 - Special Landscape Area
 - International and National Natural Heritage Designation (Natura 2000 Site and/or SSSI)
 - Local Nature Conservation Site
 - Local Nature Reserve
 - Area of Importance for Flood Management
 - Open Space
 - Greenspace Proposal (GS1-11)
 - Pentland Hills Regional Park
 - Housing Proposal (HSG 1 - HSG 37)
 - School Proposal (SCH 4-5)
 - Indicative School Proposal (SCH 1-3, SCH 6-10)
 - Strategic Business Centre
 - Business and Industry Area
 - Special Economic Area (Emp 2-8)
 - Safeguard for Potential Relocation of Royal Highland Centre
 - Local Centre
 - Town Centre
 - City Centre Retail Core
 - Commercial Centre
 - Speciality Shopping Street
 - Indicative Shopping Proposal (S1-S5)
 - Tram Route Safeguard with Proposed Stop
 - Railway Safeguard
 - Station Safeguard
 - Roundabout / Junction Improvement
 - Road Safeguard / Improvement
 - Sheriffhall Junction Upgrade
 - Cycleway/ Potential Public Transport Safeguard
 - Cycleway / Footpath Safeguard
 - Cycleway / Footpath Access Safeguard
 - Safeguard for Potential Additional Runway
 - Airport Public Safety Zone
 - Safeguarded Waste Management Facility
 - Minerals Site
- | |
|--|
| Emp 1, Emp 9-10, Hou 1, Hou 8, Ret 5, RS 3 |
| Del 3, Emp 1, Ret 6, Tra 5 |
| Table 10 |
| Table 3, Table 10, Hou 1 |
| Del 4, Hou 1, Ret 6 |
| Table 2, Del 4, Emp 8 |
| Del 5, Emp 1 |
| Env 1 |
| Env 5, Env 6 |
| Env 8 |
| Env 7 |
| Env 10 |
| Env 10 |
| Env 11 |
| Env 13, Env 14 |
| Env 15 |
| Env 15 |
| Env 21 |
| Env 18, Env 19 |
| Table 1 |
| Env 17 |
| Tables 3 & 4, Hou 1 |
| Table 5 |
| Table 5 |
| Emp 1 |
| Emp 8, RS 3 |
| Table 2, Emp 2-8 |
| Emp 5 |
| Table 6, Ret 4, Ret 8 |
| Table 6, Ret 2, Ret 6, Ret 8 |
| Table 6, Ret 1, Ret 6 |
| Table 7, Ret 3 |
| Ret 9 |
| Table 8, Ret 4, Ret 8 |
| Table 9, Tra 7 |
| Table 9, Tra 7 |
| Table 9, Tra 7 |
| Table 9, Tra 9 |
| Table 9, Tra 9 |
| Table 9, Tra 9 |
| Table 9, Tra 7-8 |
| Table 9, Tra 8 |
| Table 9, Tra 8 |
| Emp 4 |
| Tra 11 |
| RS 2, RS 3, RS 4 |
| RS 3, RS 5 |



Reproduced from the Ordnance Survey mapping with permission of the Controller of Her Majesty's Stationery Office. Crown Copyright. Unauthorised reproduction infringes Copyright and may lead to prosecution or civil proceedings. Licence Number 100023420. City of Edinburgh Council 2009.

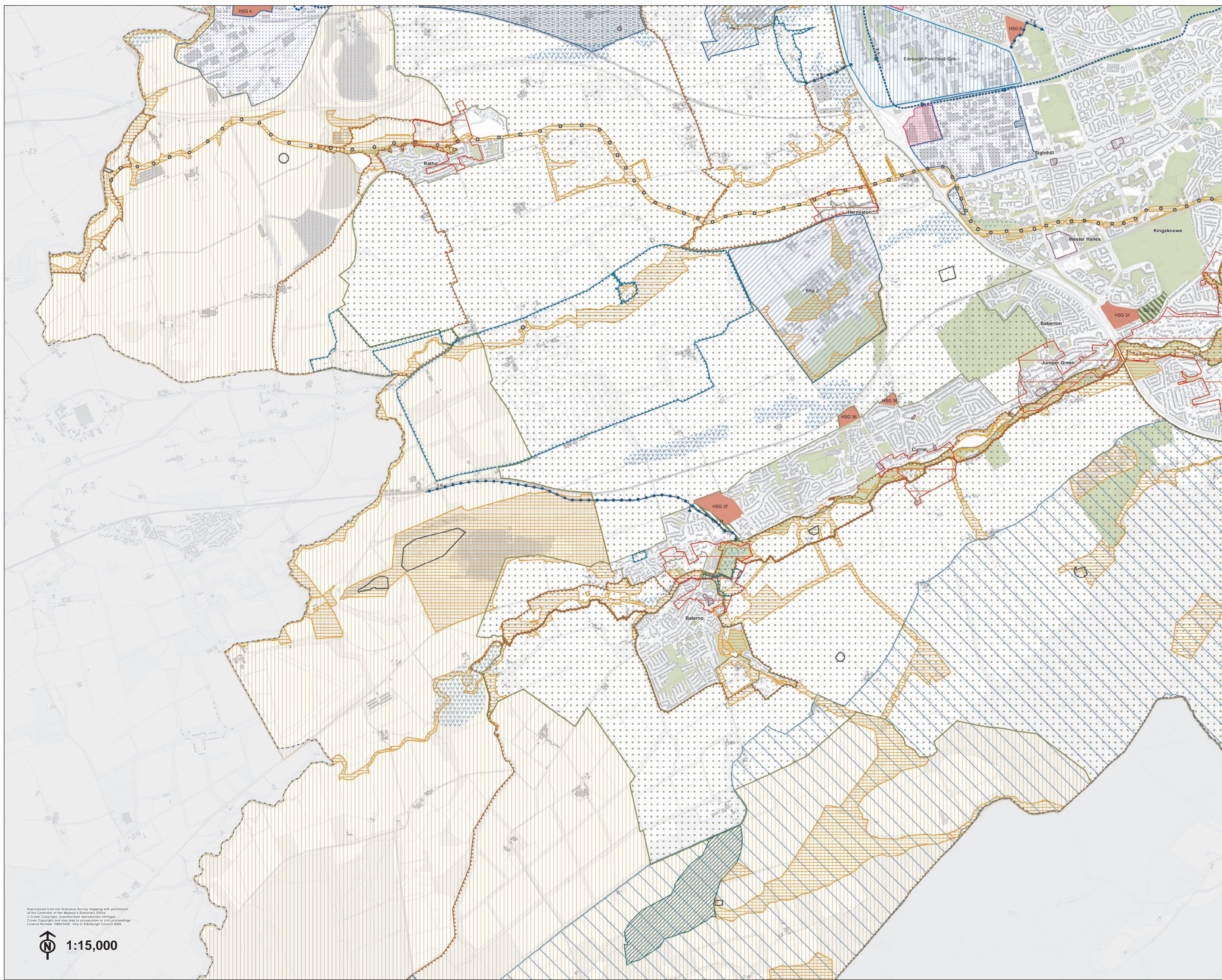
PLANNING COMMITTEE 12 JUNE 2014 EDINBURGH LOCAL DEVELOPMENT PLAN
PROPOSALS MAP
SECOND PROPOSED PLAN
JUNE 2014

The City of Edinburgh Council Boundary
General plan - wide policies

Del1: 2, Des 1-13, Env 2-4, Env 7-9, Env 12, Env 16, Env 18-22, Hou 2-7, Hou 9-10, Ret 5, Ret 7, Ret 9-10, Tra 1-4, Tra 6, Tra 8, Tra 10, RS 1, RS 4, RS 6, RS 7

Proposals Map designations and relevant policies and proposals in the Written Statement

	Urban Area - refers to all LDP area outwith the Green Belt and Countryside Policy Area	Emp 1, Emp 9-10, Hou 1, Hou 3, Ret 5, RS 3
	City Centre	Del 3, Emp 1, Ret 6, Tra 5
	City Centre Proposal	(CC1) Table 10 (CC2-4) Table 3, Table 10, Hou 1
	Edinburgh Waterfront	(EW 1a-c, EW 2a-d) Del 4, Hou 1, Ret 6 (EW 1a&e) Table 2, Del 4, Emp 8
	Edinburgh Park/South Gyle	Del 5, Emp 1
	World Heritage Site	Env 1
	Designated Conservation Area	Env 5, Env 6
	Scheduled Ancient Monument (including Union Canal)	Env 8
	Historic Garden / Designed Landscape - Inventory Site	Env 7
	Green Belt	Env 10
	Countryside Policy Area	Env 10
	Special Landscape Area	Env 11
	International and National Natural Heritage Designation (Natura 2000 Site and/or SSSI)	Env 13, Env 14
	Local Nature Conservation Site	Env 15
	Local Nature Reserve	Env 15
	Area of Importance for Flood Management	Env 21
	Open Space	Env 18, Env 19
	Greenspace Proposal (GS1-11)	Table 1
	Pentland Hills Regional Park	Env 17
	Housing Proposal (HSG 1 - HSG 37)	Tables 3 & 4, Hou 1
	School Proposal (SCH 4-5)	Table 5
	Indicative School Proposal (SCH 1-3, SCH 6-10)	Table 5
	Strategic Business Centre	Emp 1
	Business and Industry Area	Emp 8, RS 3
	Special Economic Area (Emp 2-8)	Table 2, Emp 2-8
	Safeguard for Potential Relocation of Royal Highland Centre	Emp 5
	Local Centre	Table 6, Ret 4, Ret 8
	Town Centre	Table 6, Ret 2, Ret 6, Ret 8
	City Centre Retail Core	Table 6, Ret 1, Ret 8
	Commercial Centre	Table 7, Ret 3
	Speciality Shopping Street	Ret 9
	Indicative Shopping Proposal (S1-S5)	Table 8, Ret 4, Ret 8
	Tram Route Safeguard with Proposed Stop	Table 9, Tra 7
	Railway Safeguard	Table 9, Tra 7
	Station Safeguard	Table 9, Tra 7
	Roundabout / Junction Improvement	Table 9, Tra 9
	Road Safeguard / Improvement	Table 9, Tra 9
	Sheriffhall Junction Upgrade	Table 9, Tra 9
	Cycleway / Potential Public Transport Safeguard	Table 9, Tra 7-8
	Cycleway / Footpath Safeguard	Table 9, Tra 8
	Cycleway / Footpath Access Safeguard	Table 9, Tra 8
	Safeguard for Potential Additional Runway	Emp 4
	Airport Public Safety Zone	Tra 11
	Safeguarded Waste Management Facility	RS 2, RS 3, RS 4
	Minerals Site	RS 3, RS 5



Reproduced from the Ordnance Survey mapping with permission of the Controller of Her Majesty's Stationery Office.
© Crown Copyright. Unauthorised reproduction infringes Crown Copyright and may lead to prosecution or civil proceedings.
Licence Number 10022420. City of Edinburgh Council 2009.

1:15,000